

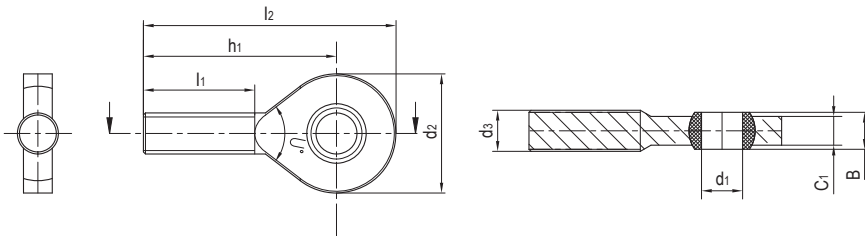
GOB杆端关节轴承，外螺纹 Rod end bearings, male thread



产品特性 Product features

- 球体采用高耐磨材料EPB15制成
 - 连接器采用高强度和尺寸稳定性材料M163制成
 - 自润滑、免维护
 - 光面设计耐灰尘
 - 很好的耐腐蚀性能
 - 补偿心中误差
 - 无噪音、重量轻
- Spherical ball made of highly wear-resistant EPB15
 - Connection rod made of high strength and shape-stable M163
 - Maintenance-free dry operation
 - Smooth design has no dirt traps
 - Absolute corrosion resistance
 - Compensation of misalignment errors
 - No noise and light weight

标准规格 Standard specifications



产品编码 Part No.:

GOBR-06

内径 Inner diameter
R: 右旋 Right
L: 左旋 Left

产品编码 Part No.	d ₁ [mm]	d ₂ [mm]	d ₃ [mm]	B [mm]	l ₁ [mm]	l ₂ [mm]	h ₁ [mm]	C ₁ [mm]	最大静态抗拉强度 Max. static tensile strength		最大径向静态负荷 Max. radial static load		最小螺纹 深度 Min. thread depth	球体最大扭矩 Max. tightening torque through ball [Nm]	重量 Weight [g]
									短期 Short-term [N]	长期 Long-term [N]	短期 Short-term [N]	长期 Long-term [N]			
GOBR-06	6	21	M6	6	20	46.5	36	4.4	850	425	80	40	14	0.5	2.7
GOBR-08	8	24	M8	8	24	53	41	6	1600	800	160	80	17	2	5.1
GOBR-10	10	29	M10	9	27	62	47.5	7	2600	1300	250	125	19	5	8.4
GOBL-06	6	21	M6	6	20	46.5	36	4.4	850	425	80	40	14	0.5	2.7
GOBL-08	8	24	M8	8	24	53	41	6	1600	800	160	80	17	2	5.1
GOBL-10	10	29	M10	9	27	62	47.5	7	2600	1300	250	125	19	5	8.4